

9065 Series

9065-8T2GS-I / 9065-8T-I

Managed 8 x 10/100 RJ45 & 2 x FX/GbE SFP
Industrial Switch /
Managed 8 x 10/100 RJ45 Industrial Switch

Description

Are you prepared for a networking solution that transcends the ordinary? Look no further than our 9065 Series, meticulously crafted to excel in the most demanding of industrial environments. Whether you operate in the realms of smart cities, surveillance, or transportation, this is the switch you've long awaited.

The 9065 Series arrives in two formidable variations – firstly, the 9065-8T-I, a Managed 8 x 10/100 RJ45 Industrial Switch, and secondly, the 9065-8T2GS-I, a Managed 8 x 10/100 RJ45 & 2 x FX/GbE SFP Industrial Switch.

These switches are meticulously engineered for excellence, delivering top-tier performance that surpasses all expectations. Encased in a rugged, hardened shell and fortified with components capable of enduring extreme levels of vibration and shock, these switches are designed to ensure uninterrupted operation even under the harshest conditions.

Crafted to thrive in extreme climates, they function flawlessly across a wide temperature range, from a bone-chilling -40°C to a scorching 75°C. Regardless of the environment, the 9065 Series ensures the seamless operation of your network.

Each port in the 9065 Series boasts two LEDs, providing instant feedback on link status, transmission speed, and link/activity status. Moreover, featuring a relay output for event alarms, you'll perpetually remain well-informed. In the event of a power failure, a built-in LED alarm activates, ensuring administrators are promptly notified.

Yet, that's not the entirety of it. The 9065 Series transcends being merely a switch; it is a tailored solution meticulously designed specifically for the smart city, surveillance, and transportation markets. Whether you're elevating urban infrastructure, reinforcing security, or optimizing transportation networks, our switches are the key to unlocking your success.

Features Highlight

SNMP Remote Management

SNMP is used for collecting information from, and configuring, network devices on an Internet Protocol (IP) network. Volktek Managed switch provides an SNMP agent that works with third-party SNMP management software to monitor the device status.

Recovery Timer for Loop Detection

Instead of being re-opened manually, a configurable timer is provided to automatically recover a port blocked by the loop detection function.

RMON

Remote Network Monitoring is a network analysis protocol, designed to aid the network administrator in gathering data on network operations such as traffic data both historical and real-time, and configurable data based on variables for time, highest or lowest traffic, users, and more.



Features Highlight

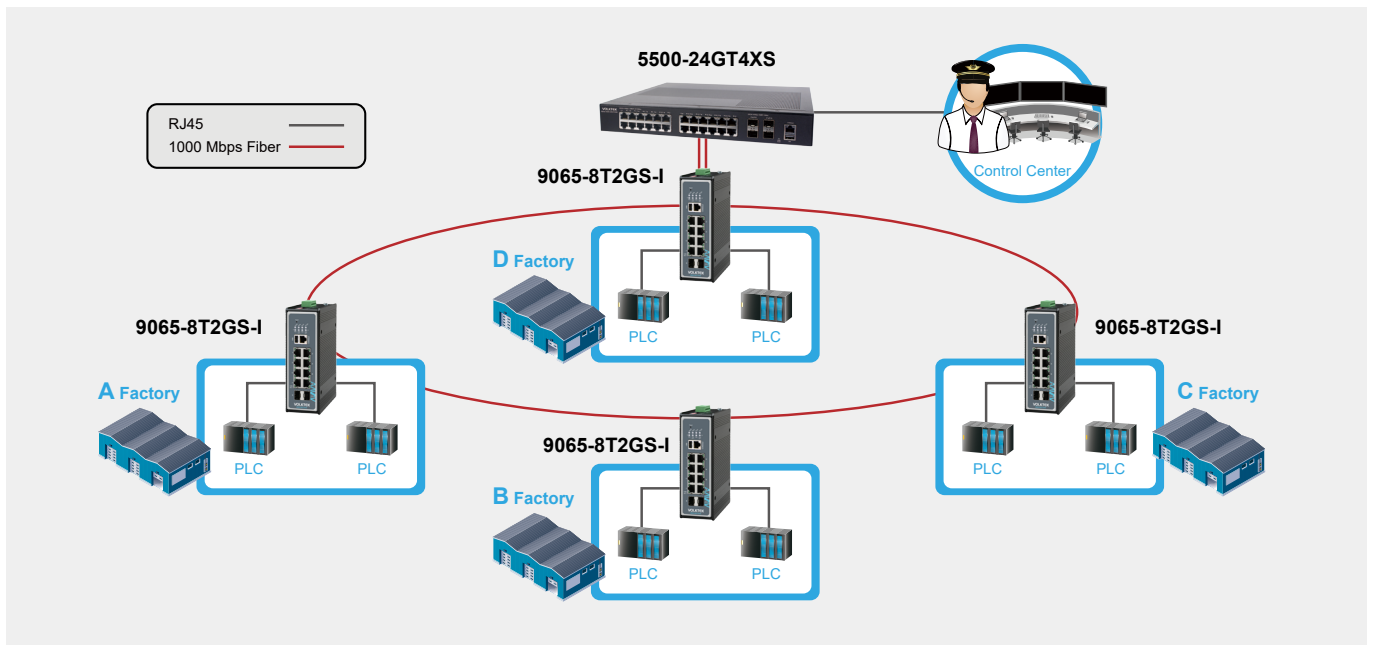
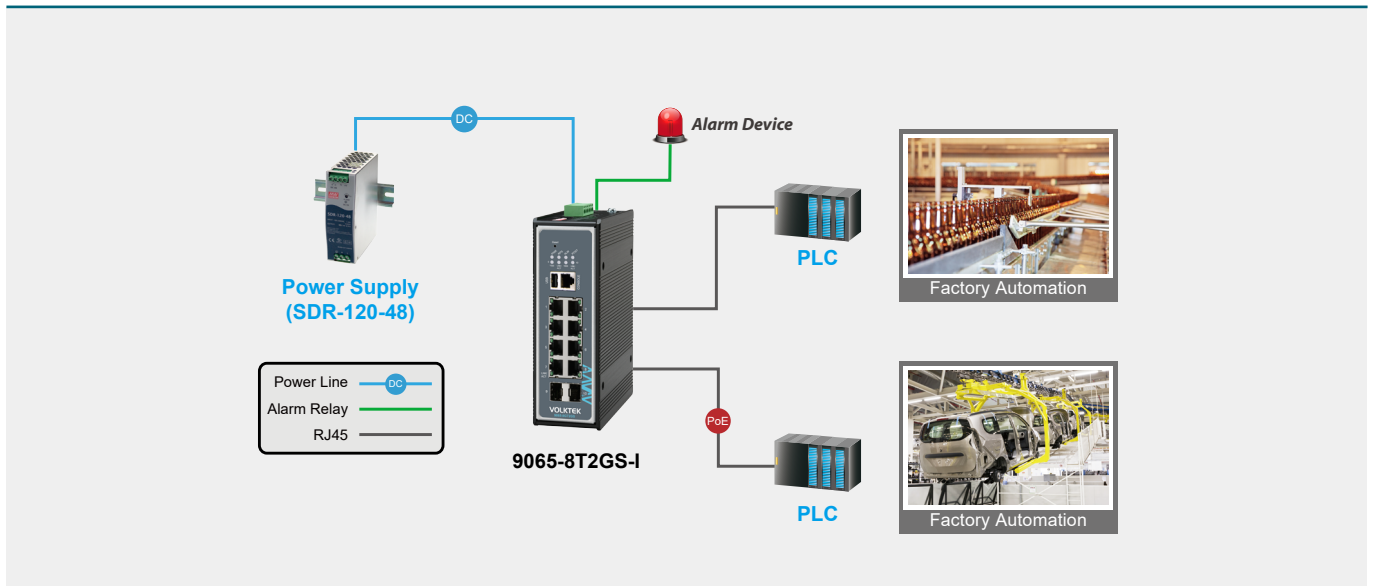
ACL

The L2/L3/L4 Access Control List (ACL) function allows you to create filter rules for determining whether the switch will forward specific packets (based on information contained in the headers) for security or control reasons. These criteria cover multiple protocol layers (including MAC and IP) and port numbers. It enables network operators to flexibly control the traffic (like blocking traffic from P2P software or throwing away packets destined for unused port numbers, which might be hacker attacks).

Dual Fiber Ports

It's useful connectivity to save the cost for fiber cable deployment. With this dual fiber link support, users can acquire the benefits of link redundancy with ring-aware switches, like Volktek management switches.

Applications



Specifications

Standards	
IEEE 802.3	10BASE-T
IEEE 802.3u	100BASE-TX
IEEE 802.3 Nway	Auto-negotiation
IEEE 802.3x	Flow Control
IEEE 802.1D	STP
IEEE 802.1w	RSTP
IEEE 802.1s	MSTP
IEEE 802.1Q	VLAN Tagging
IEEE 802.1v	Protocol-based VLAN
IEEE 802.1ad	QinQ
IEEE 802.1p	Class of service
IEEE 802.3ad	Link Aggregation
IEEE 802.1ab	LLDP
ITU-T G.8032	ERPS
IEEE 802.1X	Port Authentication
IEEE 1588v2	PTP
IEEE 802.3az	Energy Efficient Ethernet (EEE)
Interface	
Ports	8 x 10/100 RJ45
	2 x FX/GbE SFP
	1 x RS232 Console Port
	1 x USB Port
DIP Switch	Primary/Redundant Power Voltage Drop Alarm setting
LED Panel	PWR, RPS, ALM, POST, 100, LNK/ACT
Features	
Performance	Jumbo Frames Size: 10Kbytes
	MAC Table Entries: 16K
	Active VLAN: 4K
	Switching Fabric: 5.6Gbps
	Forwarding Rate: 4.1Mpps
Management	CLI, Telnet/SSH, HTTP/HTTPS, SNMP v1/v2c/v3, SNMP Trap, MVLAN, Firmware Upgradable, Configuration Backup/Restore, Syslog, SNT, PTP, LLDP, UDLD, DHCP Client, DHCP Option 82, DHCP Relay, PPPoE IA, e-mail Alarm, Server Control, Mirroring, DDM, MIB, Hardware Monitor, DDMI, Dying Gasp, RMON, FTP/TFTP
	STP/RSTP/MSTP, Xpress Ring, ERPS v1/v2, Dual Homing, LACP, Code Redundancy, Static Trunk
VLAN	IEEE 802.1Q, GARP/GVRP, Port-based VLAN, MAC-based VLAN, IP-based VLAN, VLAN Translation, Protocol-based VLAN, Management VLAN, VLAN Stacking (QinQ)
Traffic Control	IGMP snooping/Throttling/Proxy, MLD, MVR, QoS, Flow Control, Abnormal Traffic Detection, Rate Limit, Storm Control, Traffic Monitor, Port Isolation, Loop Detection, Static Route, IGMP Querier, IGMP Message Filtering
IPv6	IPv4/IPv6 dual protocol stack, IPv6 Neighbor Discovery, IPv6 Management (TELNET, HTTP, HTTPS, SSH, PING6, TACACS+), DHCPv6 Client, IPv6 Default Gateway, IPv6 Static Route, IPv6 Inter-VLAN Routing, IPv6 Forwarding, IPv6 SNMP, IPv6 SNMP Trap, IPv6 Syslog, IPv6 SNT, IPv6 Auto-provisioning, IPv6 MLDv1/v2, IPv6 ACL, IPv6 ARP, IPv6 Mail Alarm

Security	ACL, SSH, Port-based 802.1x, TACACS+, Port Security, MAC Search, Refusal MAC, Sticky MAC, Static MAC, DHCP Snooping, DHCP Sever Screening, ARP Inspection, BPDU Guard/Filter, Root Guard, Management Host, HTTPs, MAC aging time, IP Source Guard, MAC Anti-spoofing	
Power		
Input Voltage	Primary inputs: 12-48V DC Redundant inputs: 12-48V DC	
Power Consumption	18W	
Mechanical and Environment		
Housing	Aluminum (IP30 Protection)	
Mounting	DIN-Rail	
Operating Temperature	-40°C~70°C (-40°F~158°F)	
Storage Temperature	-40°C~85°C (-40°F~185°F)	
Operating Humidity	5 to 95% RH (non-condensing)	
Storage Humidity	5 to 95% RH (non-condensing)	
Weight	970g (2.2lb)	
Dimension (W x H x D)	50 x 161.5 x 120mm (1.97 x 6.36 x 4.72in)	
Certifications		
CE	EMI	FCC Part 15 Subpart B Class A EN 55032 / UKCA Class A EN55035 / UKCA CISPR 32 Class A EN 55011 / UKCA Class A CISPR 11 Class A
	EMS	EN 61000-6-4 / UKCA ICES-003 Issue 7 EN 61000-6-2 / UKCA EN 61000-4-2 (ESD) EN 61000-4-3 (RS) EN 61000-4-4 (EFT) EN 61000-4-5 (Surge) EN 61000-4-6 (CS) IEC 61000-4-8 (PFMF)
Shock	IEC 60068-2-27	
Freefall	IEC 60068-2-31	
Vibration	IEC 60068-2-6	
Safety	UL 61010-1, UL 61010-2-201	
Ordering Information		
9065-8T2GS-I	Managed 8x 10/100 RJ45 & 2x FX/GbE SFP Industrial Switch, USB support	
9065-8T-I	Managed 8x 10/100 RJ45 Industrial Switch, USB support	
Optional Accessories		
Power Supply	SDR-120-48: 120W DIN-Rail 48VDC Industrial Power Supply, -25°C~70°C (-13°F~158°F)	
GBM-123TS	1000BASE-LX, Bi-Di SFP TX:1310/RX:1550 Single Mode, 10Km	
GBM-123RS	1000BASE-LX, Bi-Di SFP TX:1550/RX:1310 Single Mode, 10Km	

Note:

* The SFP communication distance upon the request.

* Industrial SFP with wide operating temperature from -40°C~85°C is available upon request.

* The highest degree of temperature operation certified by UL is -40°C~75°C (-40°F~167°F).

* Specifications subject to change without notice.

Dimension

